

# Community collaboration

Extend your Teamcenter data to the enterprise value chain

## Benefits

- Increase innovation by securely linking people with each other and diverse sources of product knowledge for better and faster product-related decisions
- Reduce the costs associated with arranging meetings for design reviews and iterations
- Maximize team efficiency and productivity by using dynamic processes and teams to enable enterprise-wide collaboration on product data from simple documents to rich 3D product data
- Leverage existing IT strategy and investments for rapid deployment, reducing risk for rapid ROI

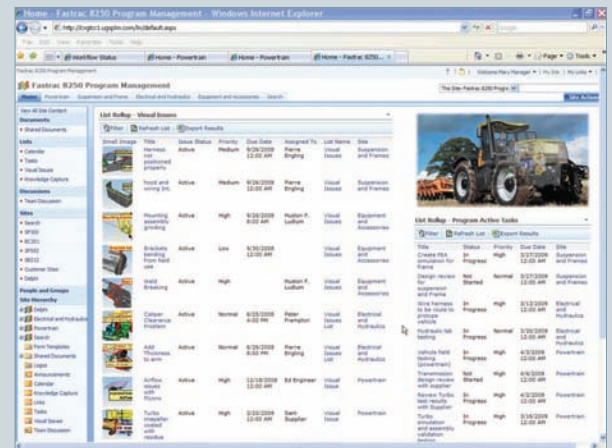
## Summary

To maximize the value of your product data and increase your innovation potential, global teams can use Teamcenter® community collaboration software. Teamcenter can unite diverse participants across companies, geographies, time zones, firewalls and systems in an intuitive, web-based, collaborative environment. Teamcenter supports global teaming by connecting every user's desktop, bringing people together with the tools and services they need to perform as a team and connecting them with the product knowledge of the extended enterprise to ensure that right decisions can be made at every decision point. This approach avoids rework, reduces cost and accelerates time-to-market.

## Enhance your business initiatives for revenue growth

Manufacturers today are under intense pressure to deliver winning products to market more quickly and at reduced costs. To achieve these goals, companies can no longer do it alone. They must engage partners and suppliers.

To compete in the digital economy, companies must form extended enterprises – with participants across different continents, companies, time zones and computing platforms. These teams require a comprehensive set of collaboration services to connect individual users with one another, as well as with the product knowledge of their extended enterprise.



TEAMCENTER

[www.siemens.com/teamcenter](http://www.siemens.com/teamcenter)

SIEMENS

## Community collaboration

### Features

- High-performance, lightweight 3D visualization
- Real-time 2D/3D conferences
- CAD collaboration
- Secure data with access control
- Seamless integration with enterprise data
- Visual issues list
- Routing and tracking of tasks, issues and documents
- Personalized user interface
- Team sites and dashboards
- Rapid and flexible deployment with transparent footprint
- Social networking tools (Wiki's, blogs, RSS, survey)

### Community collaboration requirements

Teamcenter's community collaboration software was developed to operate in the Microsoft Office business environment with SharePoint Server.

To provide these services, Siemens PLM Software offers Teamcenter's community collaboration solution. Community collaboration is a web-based collaboration environment that extends the reach of Teamcenter product lifecycle collaboration capabilities to everyone in the extended enterprise.

### Teamcenter advantages

Teamcenter enables product lifecycle collaboration by simply and easily extending information to the wider, distributed business enterprise, allowing you to securely share PLM data with globally dispersed teams and external partners.

The environment's intuitive web-based user interface requires minimal user training and enables users to quickly create virtual team workspaces, where they can gather ad hoc knowledge and share product data or host an unplanned, or planned, meeting and create collaboration groups on the fly. You can use these workspaces to:

- Increase innovation by making data available at all lifecycle stages
- Monitor your enterprise from a single, simple interface
- Leverage knowledge from your entire value chain
- Eliminate errors and rework

Teamcenter facilitates rich real-time, ad hoc, interpersonal collaboration with integrated visualization. All stakeholders can view, markup and analyze 3D product data using the best-in-class JT™ format without the overhead of learning to use or install a CAD tool.

Teamcenter delivers integrated visual, document and application sharing conference capabilities that enable globally dispersed product teams to review

design issues and product concerns in real time and quickly identify problems and reach mutual decisions. You can leverage these capabilities to:

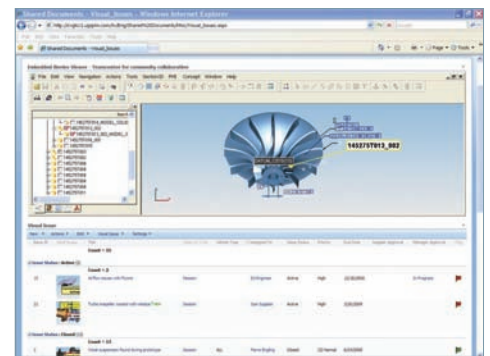
- Reduce costs associated with travel
- Instantly put information at everyone's fingertips
- Increase productivity by breaking down the walls between divisions

Teamcenter enables product teams to easily capture and share a visual representation of product issues as part of their review and approval process. This information can be conveniently stored in a central location, which all team members can access and interactively leverage.

Visual representation gets everyone on the same page, enabling them to reduce the time and costs associated with understanding and resolving engineering issues. Visual representation enables you to:

- Maintain tight control over sensitive data
- Give the right information to the right people, instantly
- Ensure stakeholder buy-in by providing a single voice for your entire value chain

*Teamcenter's community collaboration software is the best-in-class ad hoc collaboration tool for product development available in the industry!*



Contact  
Siemens PLM Software  
Americas 800 498 5351  
Europe 44 (0) 1276 702000  
Asia-Pacific 852 2230 3333

[www.siemens.com/teamcenter](http://www.siemens.com/teamcenter)

© 2010 Siemens Product Lifecycle Management Software Inc. All rights reserved. Siemens and the Siemens logo are registered trademarks of Siemens AG. D-Cubed, Femap, Geolus, GO PLM, I-deas, Insight, Jack, JT, NX, Parasolid, Solid Edge, Teamcenter, Tecnomatix and Velocity Series are trademarks or registered trademarks of Siemens Product Lifecycle Management Software Inc. or its subsidiaries in the United States and in other countries. All other logos, trademarks, registered trademarks or service marks used herein are the property of their respective holders.  
X10 2992 8/10 B